

# **First Trimester LCAP & District Measures Update**

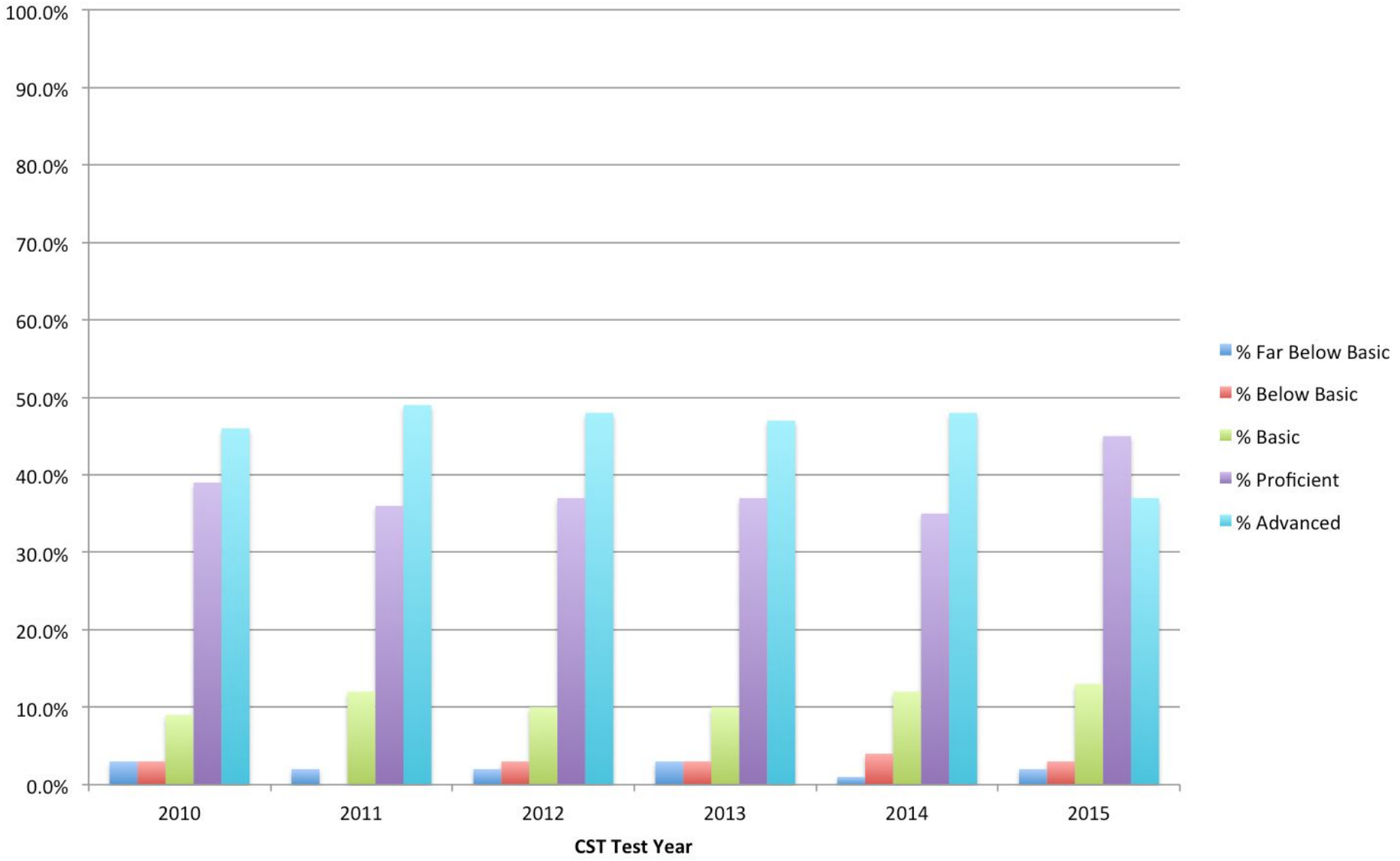
Mary Jude Doerpinghaus and Tom Keating  
December 17, 2015

# Agenda

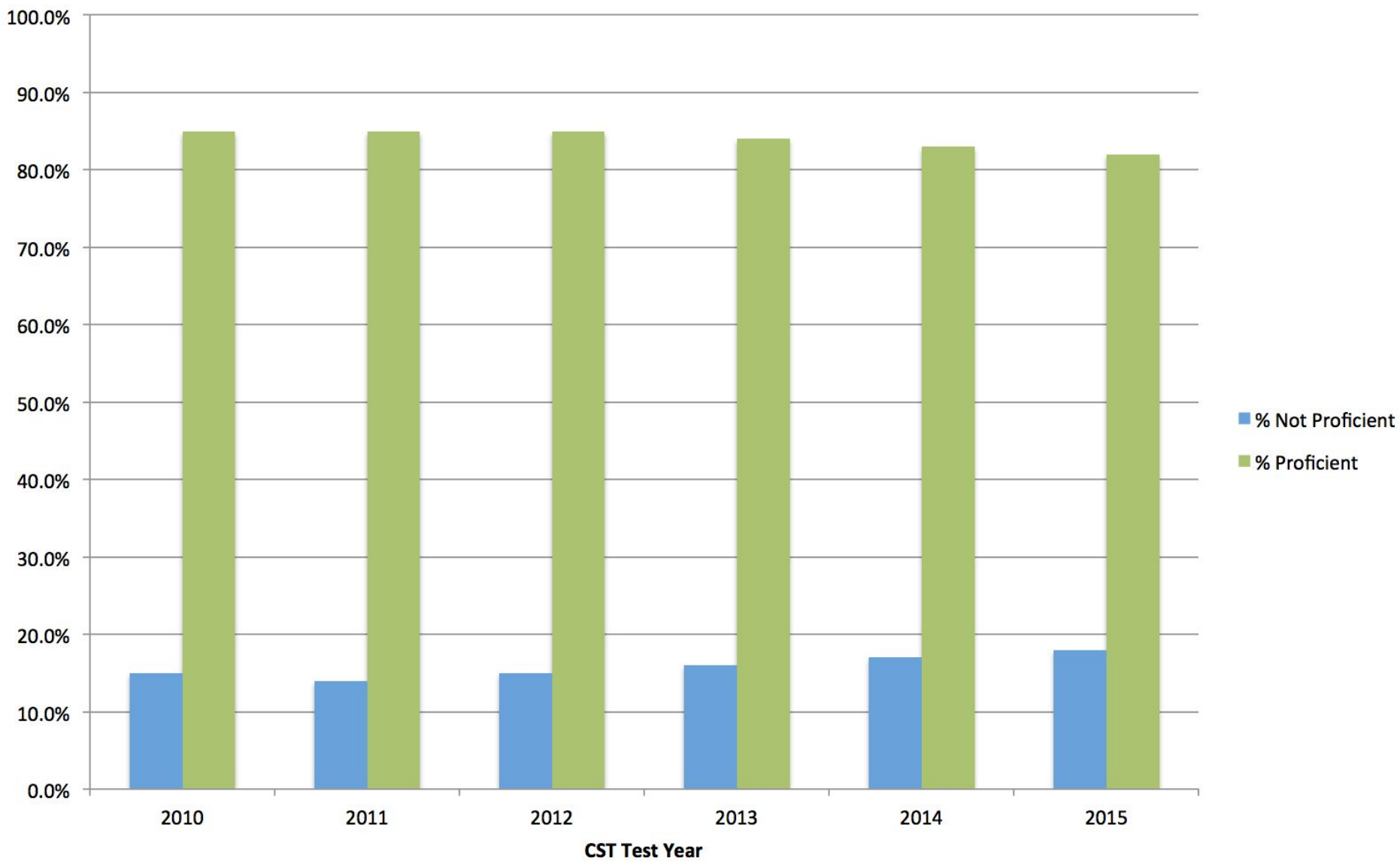
- New Data (first view)
- Follow-up on SBAC District subgroup data

**NEW DATA**

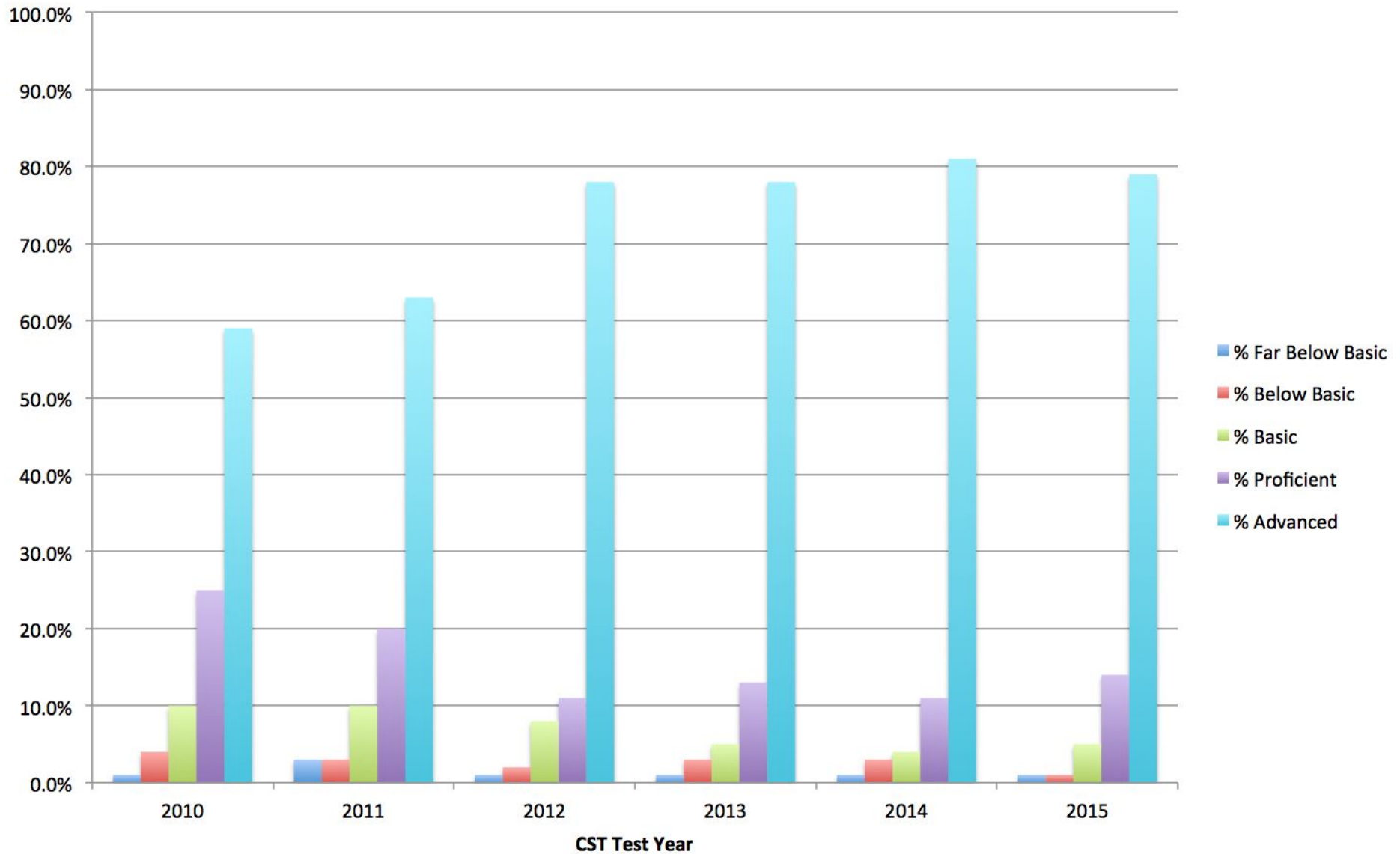
# Fifth Grade CST Science Results 2010 to 2015



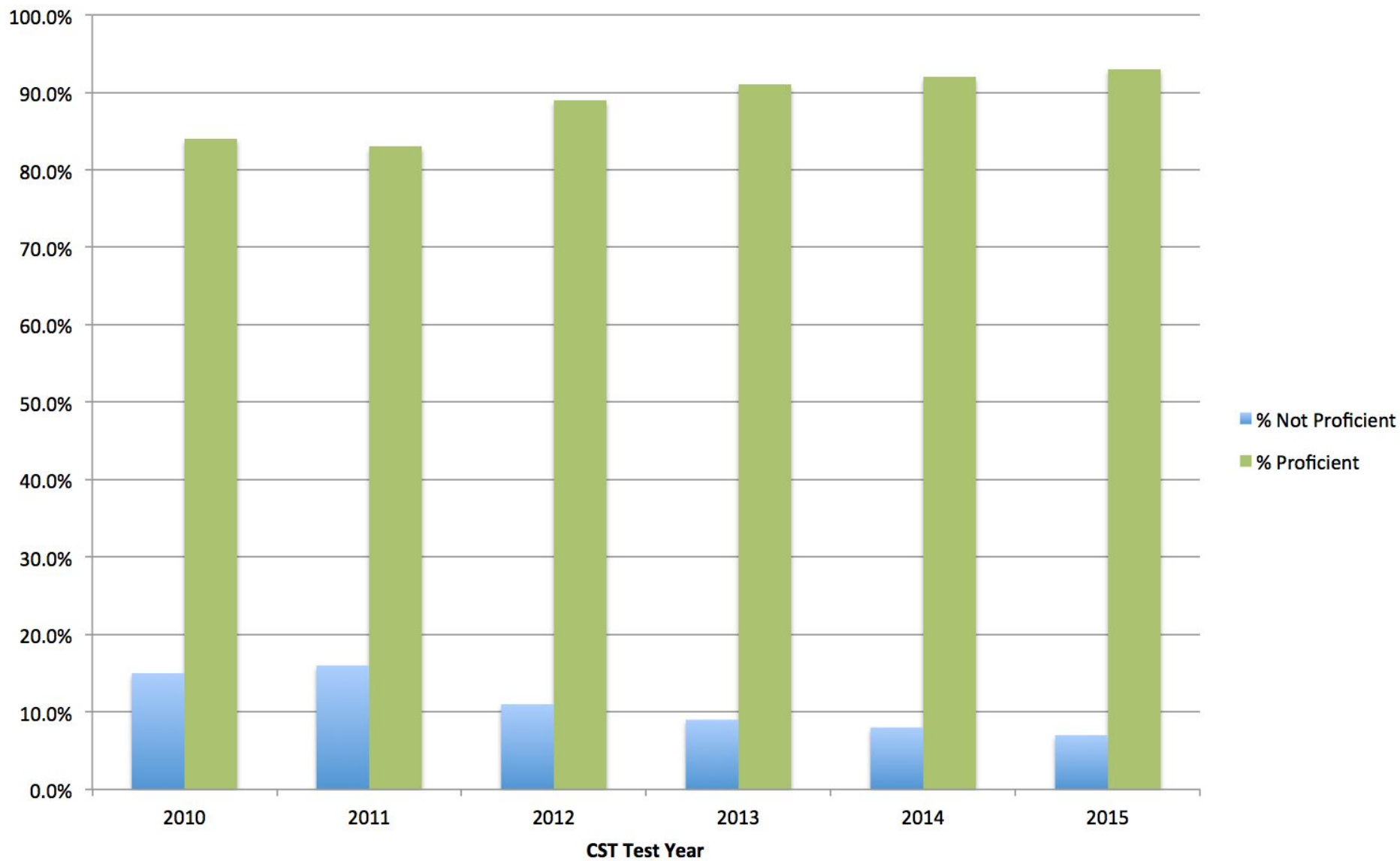
## Fifth Grade CST Science Results 2010 to 2015



## Eighth Grade CST Science Results 2010 to 2015



## Eighth Grade CST Science Percent Proficient 2010 to 2015

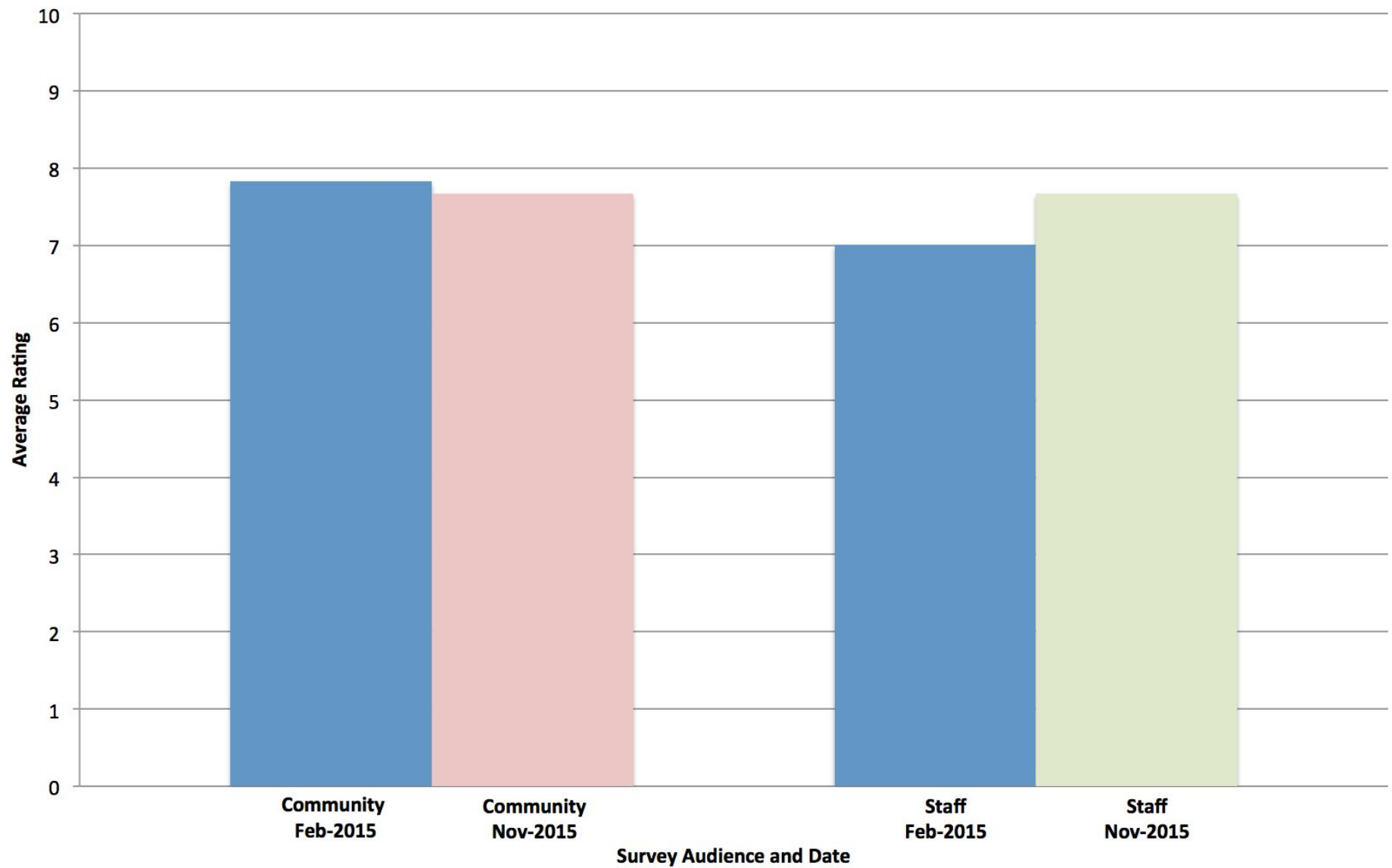


# One Minute One Question Survey Results 2015

Survey and Date Administered	No. of Responses	Average Rating	Rating Change	No. of Comments
Community February 2015	1058	7.83	--	287
Community November 2015	1191	7.67	-0.16	493
Staff February 2015	187	7.01	--	101
Staff November 2015	219	7.67	0.66	80



## Year-To-Year One Minute One Question Survey Comparison



# One Minute One Question Community Survey Comments

Comment Category	February 2015	November 2015	Percent Change
Teacher Quality	31.0%	15.2%	-15.8%
Electives	7.3%	12.2%	4.9%
Homework	8.7%	10.1%	1.4%
Personalized Learning	9.8%	9.7%	-0.1%
Academic Rigor/Gifted and Talented	17.1%	7.9%	-9.2%
STEM	7.4%	7.9%	0.5%
Foreign Language	8.0%	7.5%	-0.5%
Math Curriculum and Pathways	11.9%	6.7%	-5.2%
21st Century Learning/PBL	4.2%	5.9%	1.7%
Facilities	4.9%	5.9%	1.0%
Class Size	4.1%	5.1%	1.0%
Leadership	10.4%	2.4%	-8.0%

# One Minute One Question Staff Survey Comments

<b>Comment Category</b>	<b>February 2015</b>	<b>November 2015</b>	<b>Percent Change</b>
<b>Overwhelmed/Morale</b>	28.8%	40.0%	11.2%
<b>Professional Development</b>	10.9%	11.3%	0.4%
<b>Pay</b>	17.8%	10.0%	-7.8%
<b>Communication</b>	2.9%	8.8%	5.9%
<b>Leadership/Admin</b>	34.5%	6.3%	-28.2%
<b>Facilities</b>	18.8%	5.0%	-13.8%
<b>Board</b>	5.6%	1.3%	-4.3%

# District Student Measures

- Math and English Language Arts-SBAC
- Math-MARS assessment
- Writing-District Assessment
- Reading-DRA-2
- California English Language Development Test (CELDT)

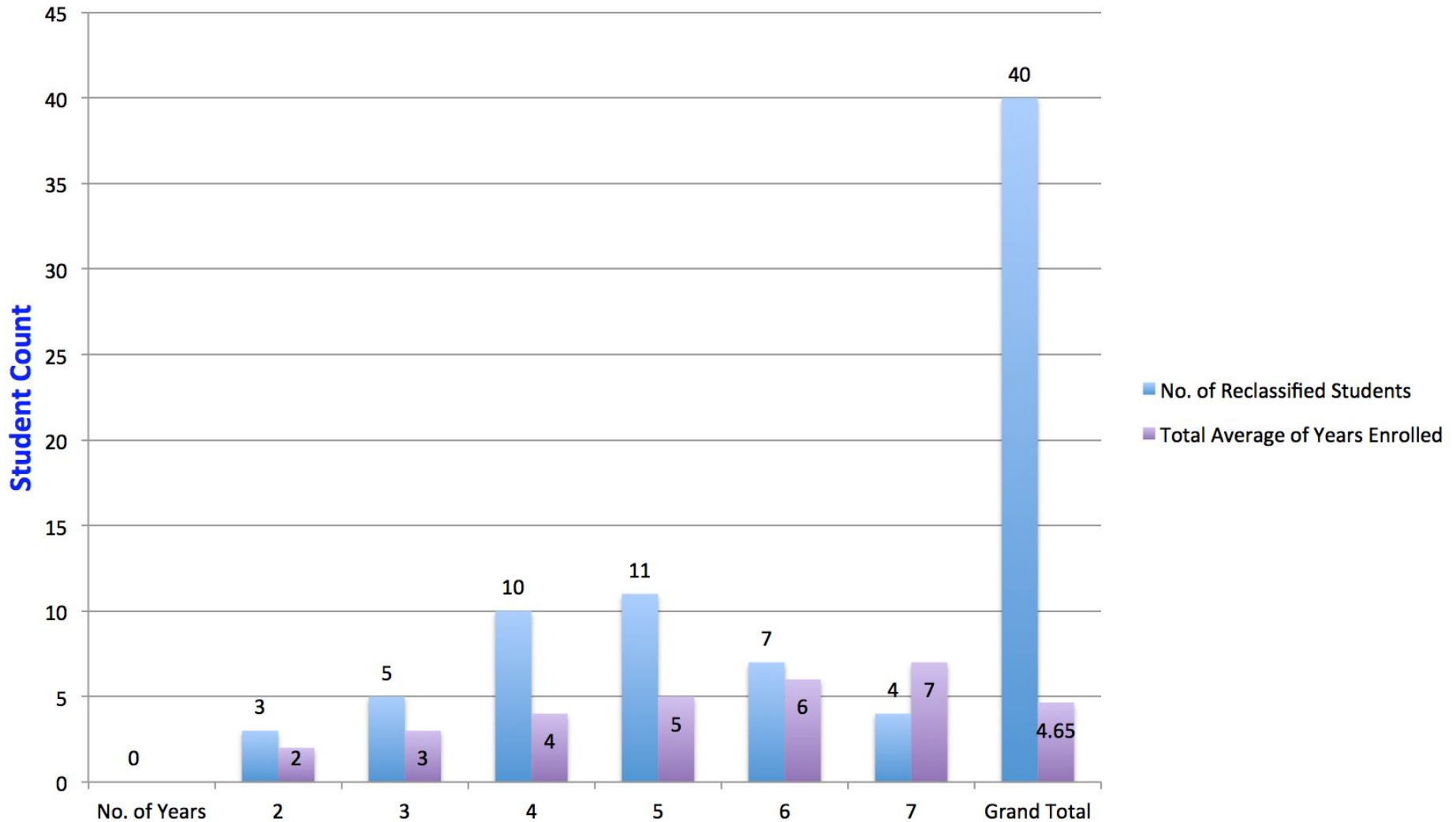
# DRA-2 - Reading Proficiency

	Percent Meeting Reading Proficiency
First Grade	88.6%
Second Grade	88.0%
First and Second Grades Combined	88.3%

# English Learner Data

- CELDT
  - 70.4% of English Learners met annual growth target (District Target = 75%)
- R-FEP
  - English Learners took an average of 4.6 years to be reclassified (Target = 4.0 years)

## Reclassification Over Years of Enrollment And Average Years After CEBDS Date Of 2014-2015



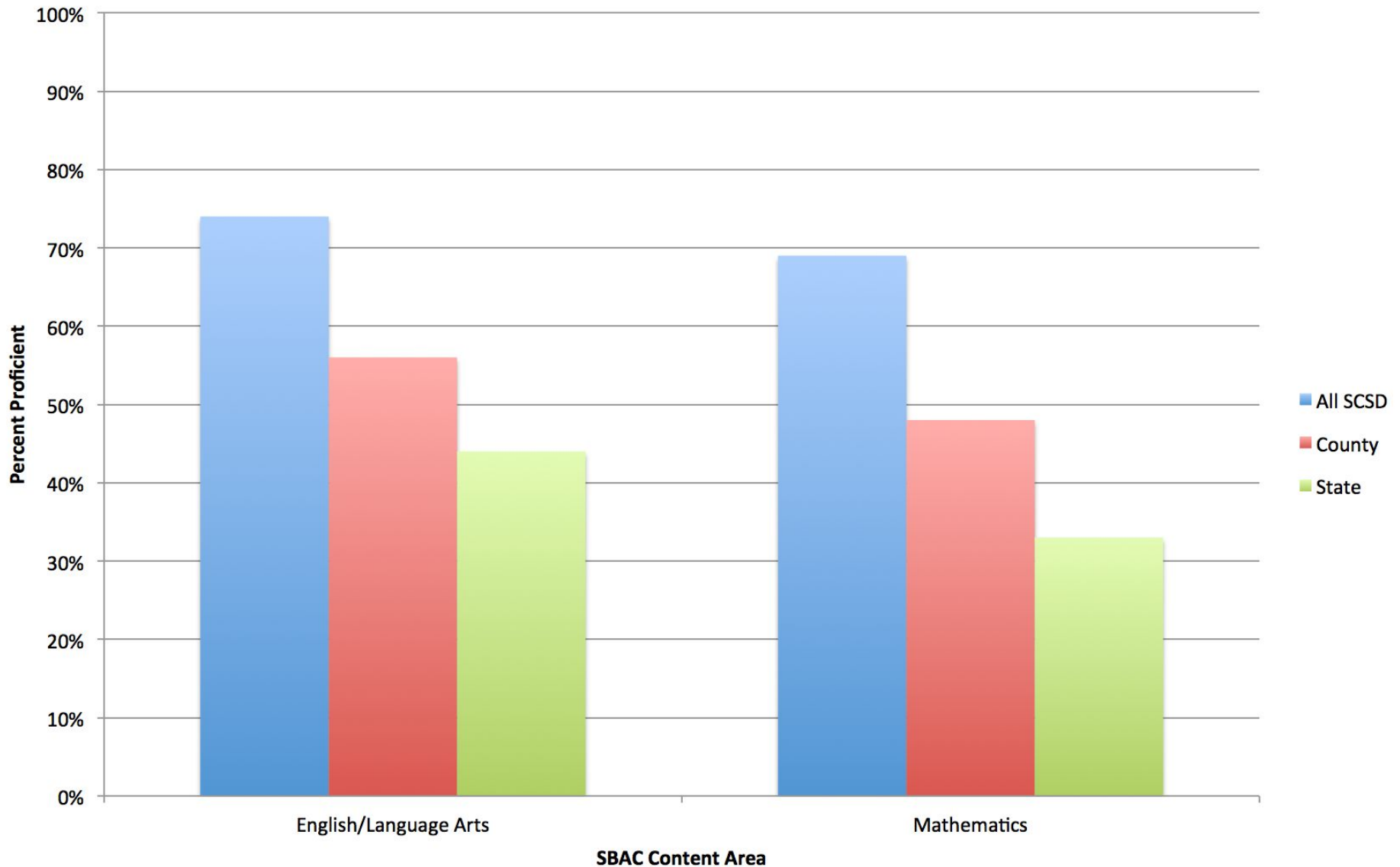
# SBAC Subgroup Analysis

- District Overview
- Disability
- English Language Learners
- Gender
- Economically Disadvantaged
- Ethnicity
- Foster Youth

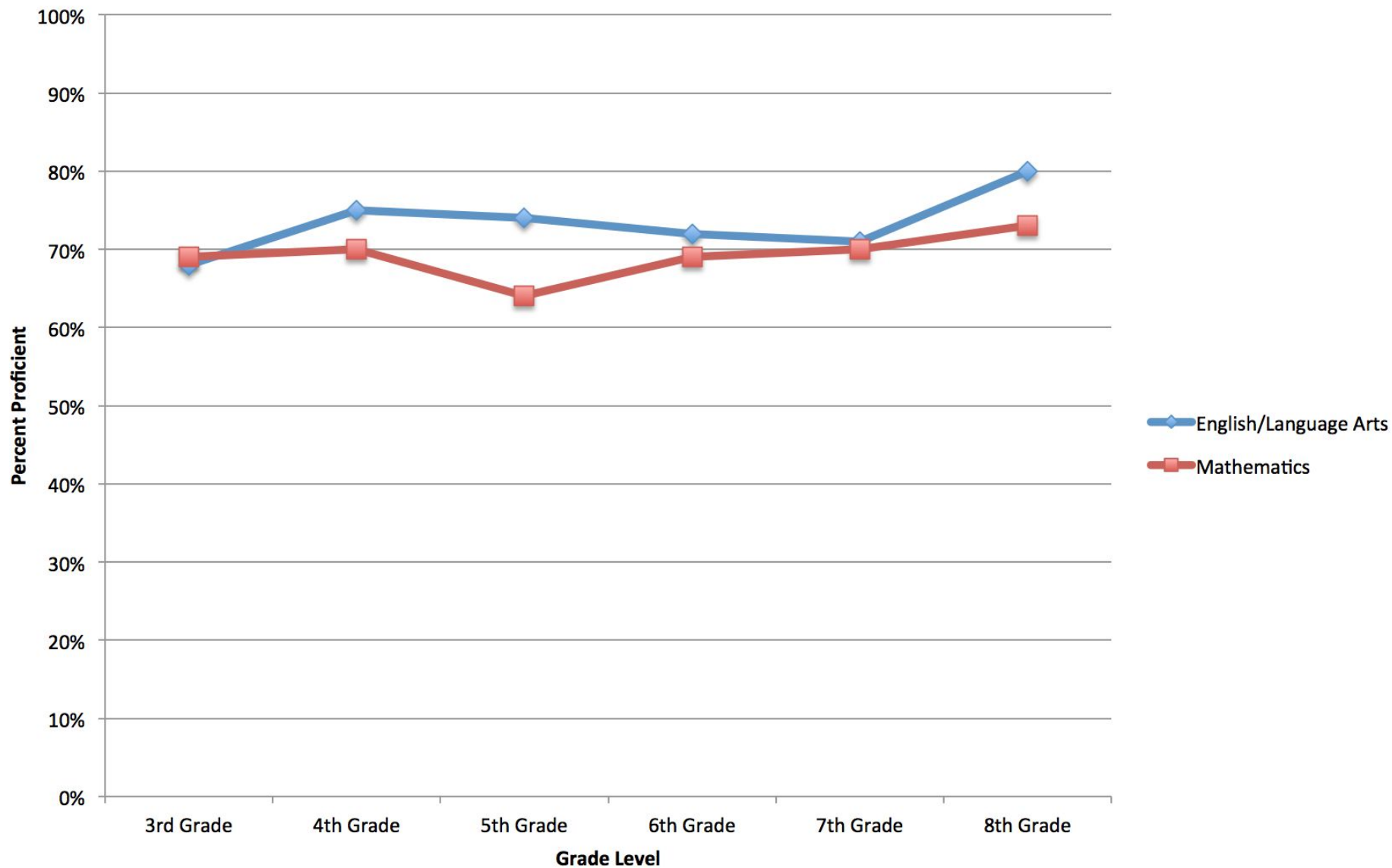


# **Overview of SBAC Subgroup Data**

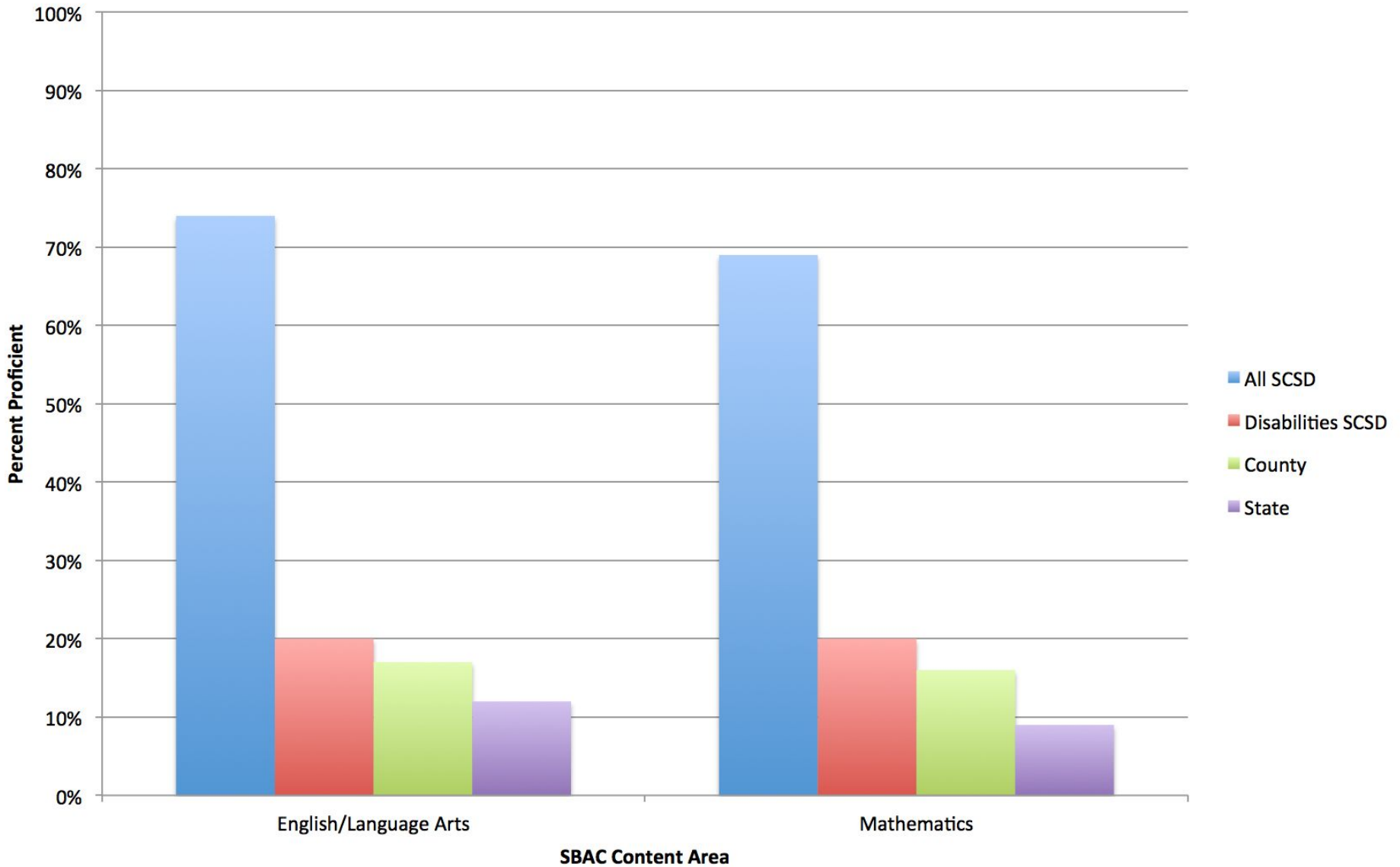
## All SCSD Students Percent Proficient on SBAC



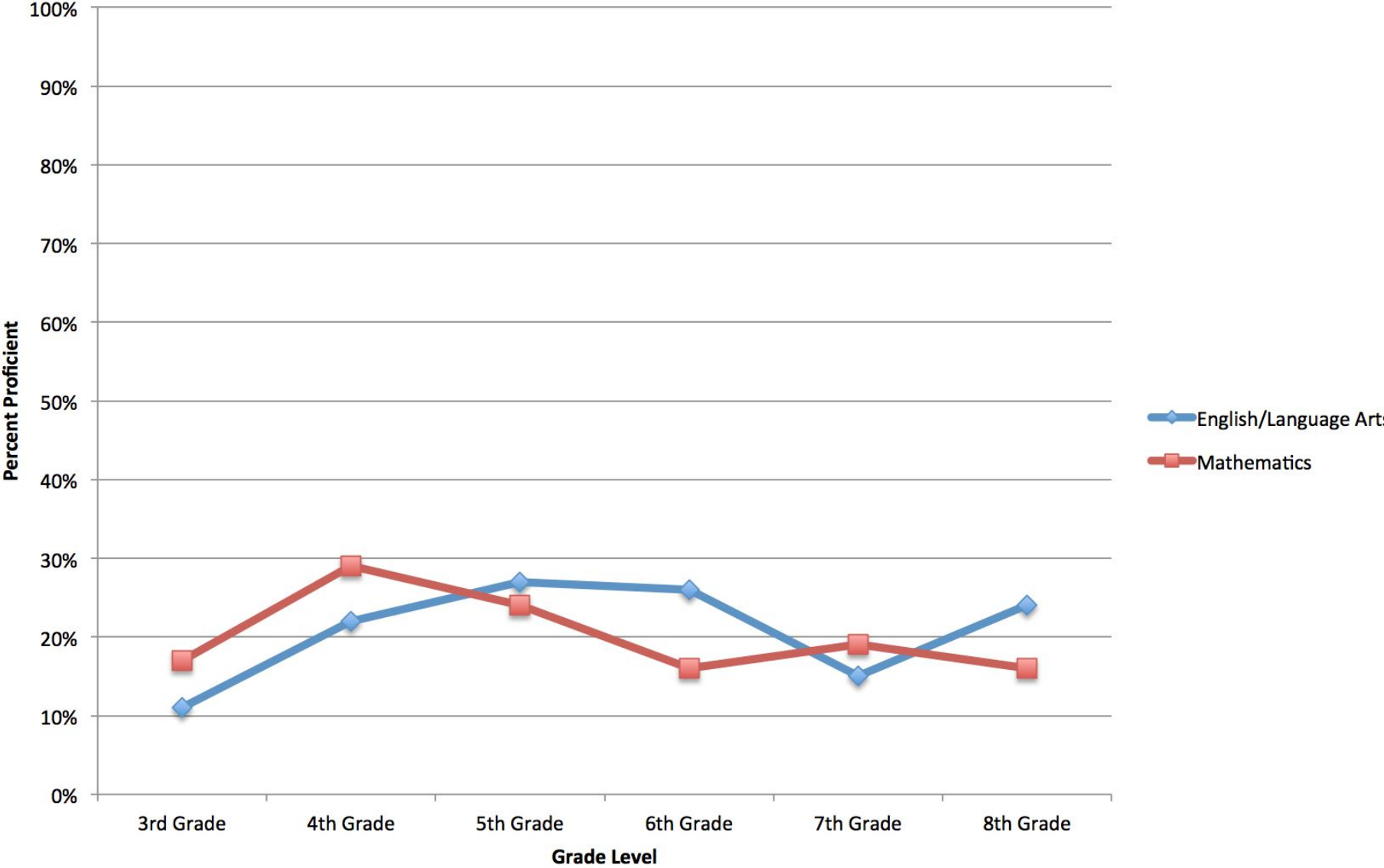
## All SCSD Students Percent Proficient on SBAC by Grade



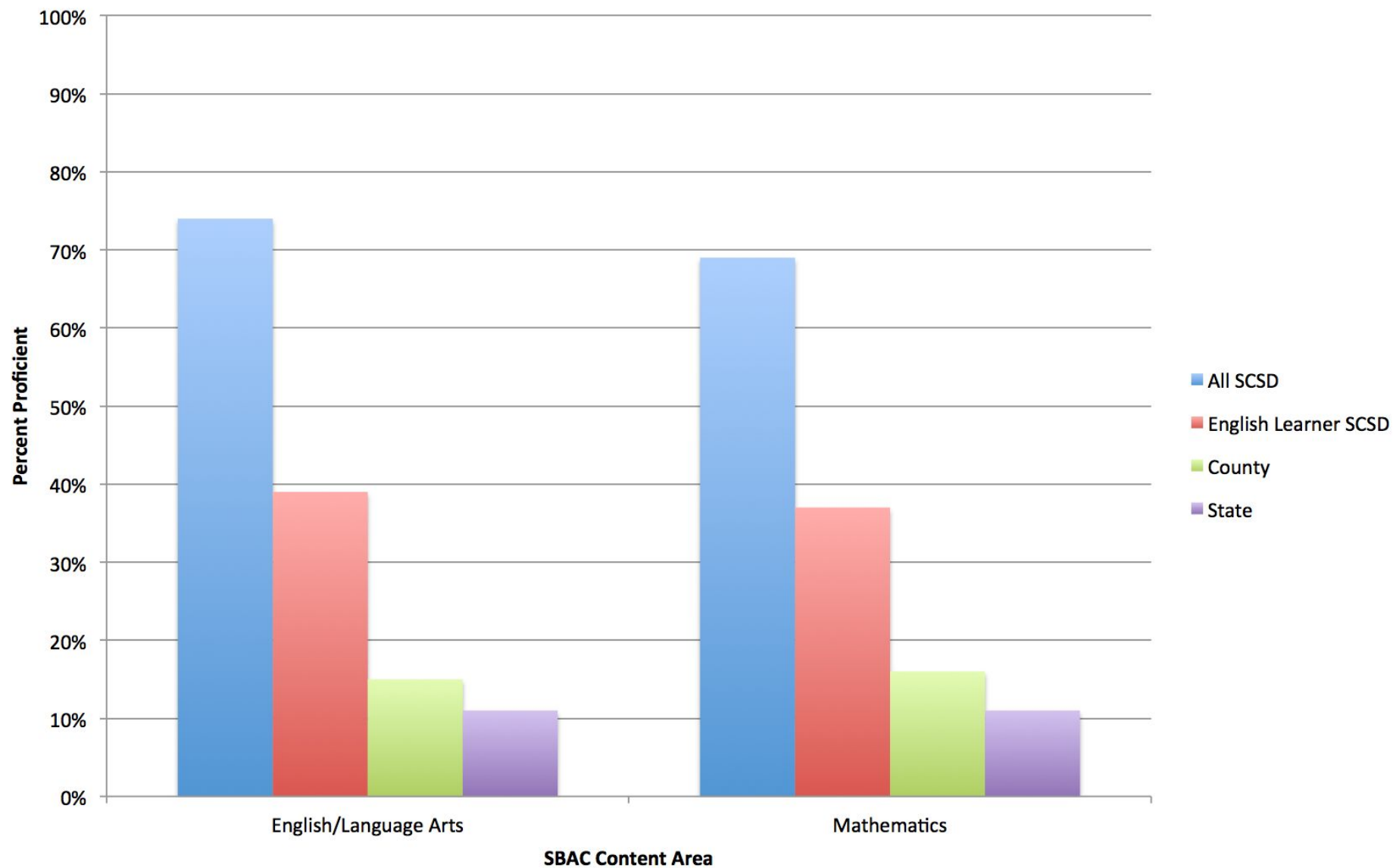
## Students With Disabilities Percent Proficient on SBAC



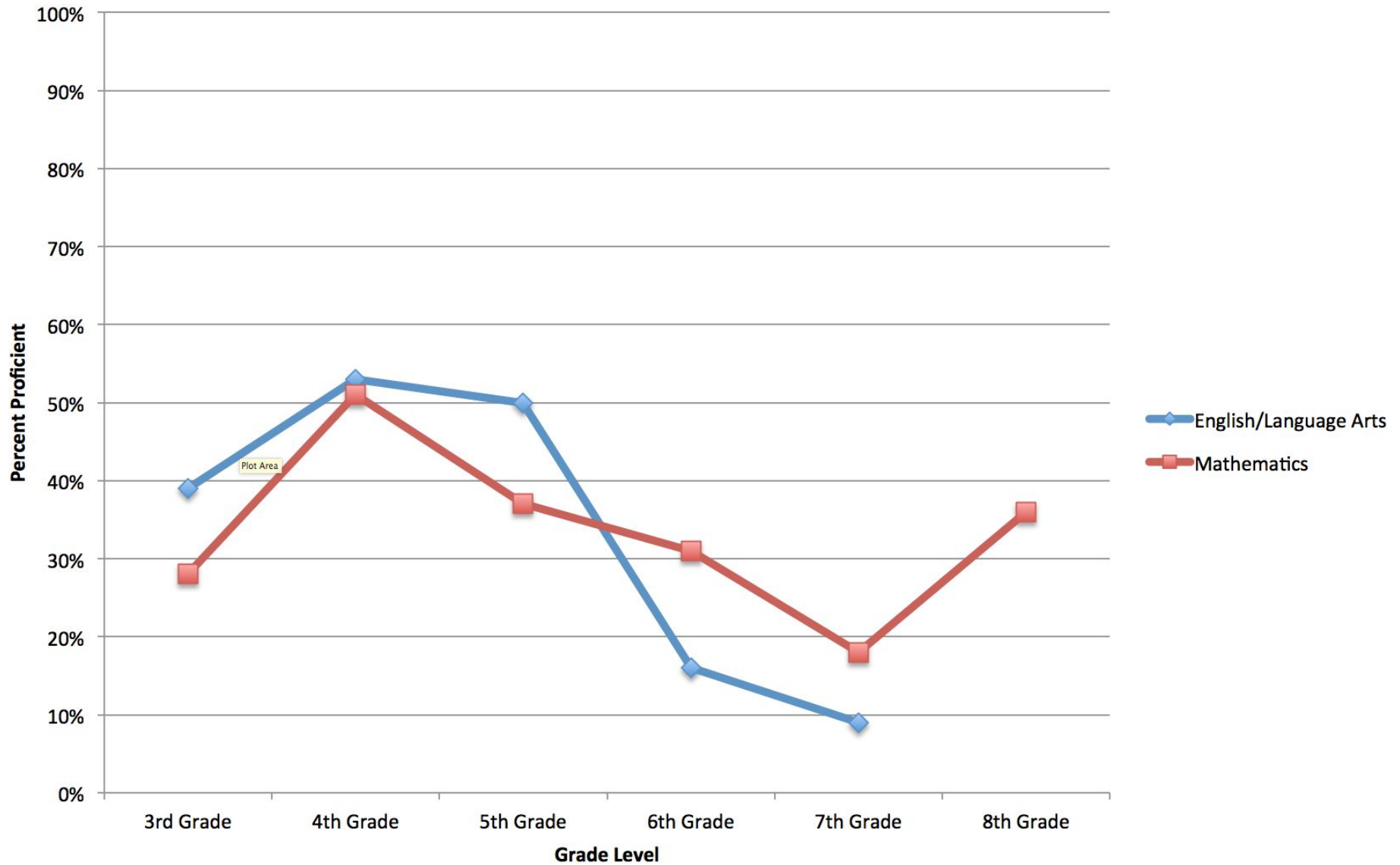
# Students With Disabilities Percent Proficient on SBAC by Grade



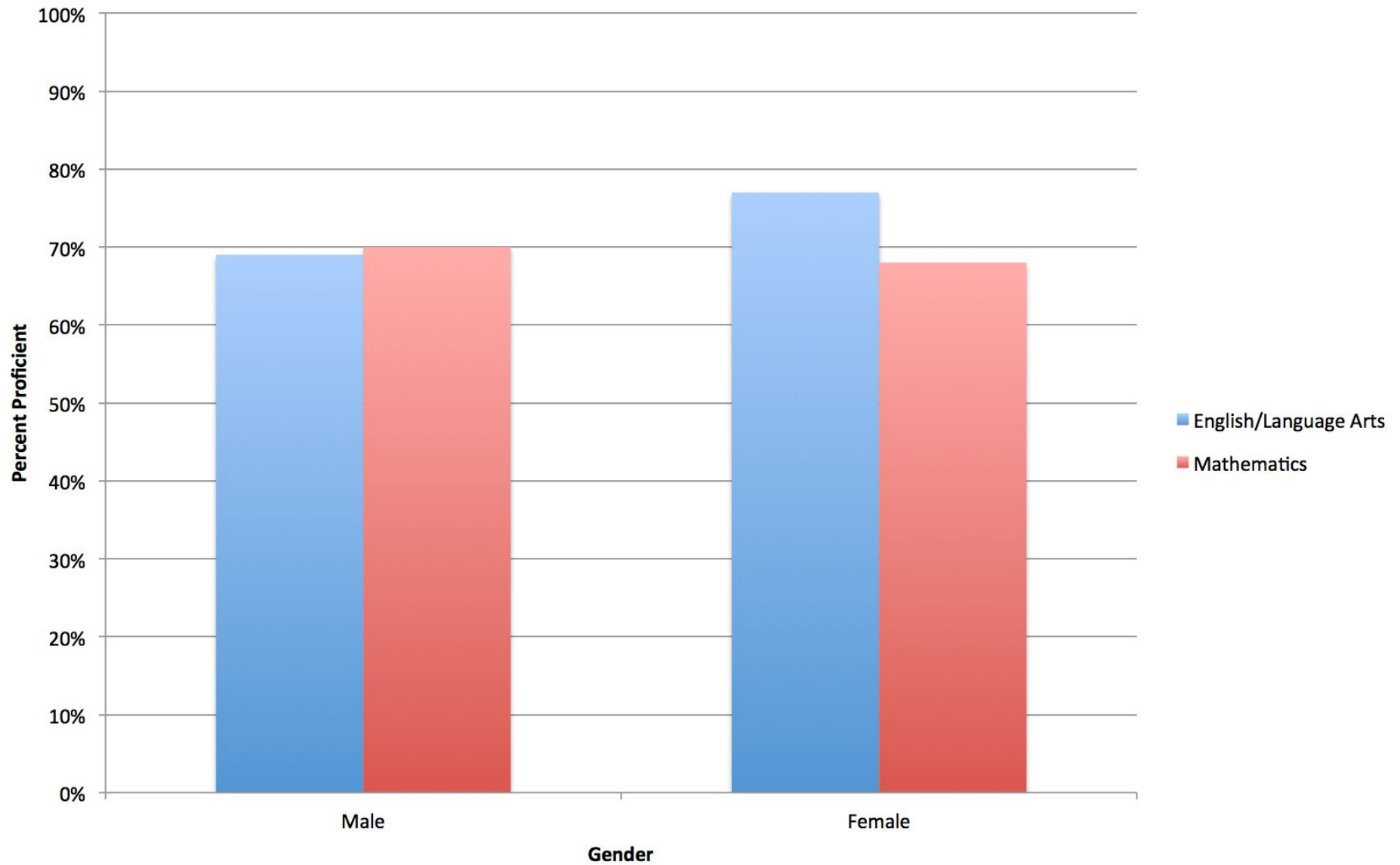
## English Language Learners Percent Proficient on SBAC



## English Learners Percent Proficient on SBAC by Grade

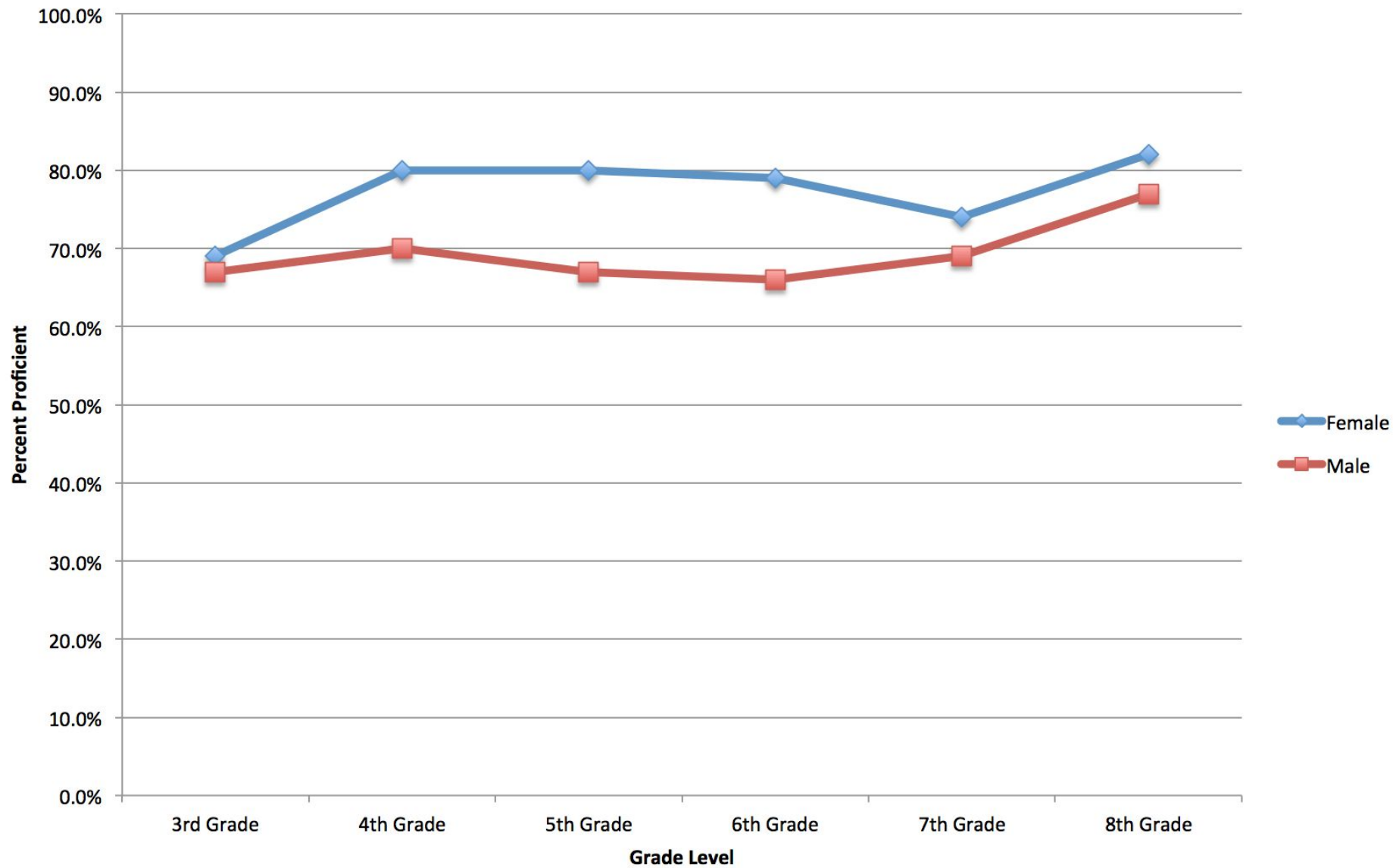


## Percent Proficient on SBAC by Gender

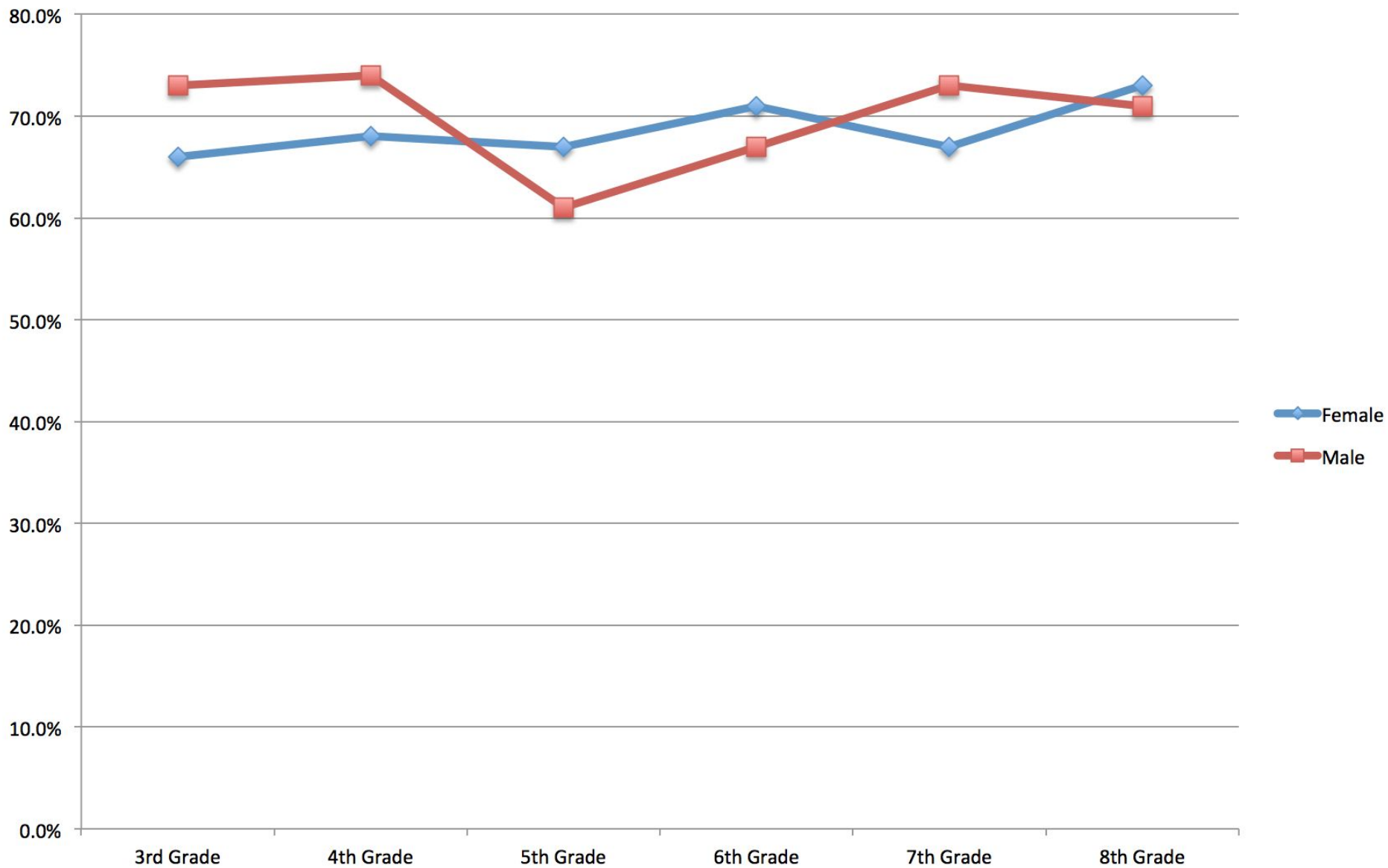




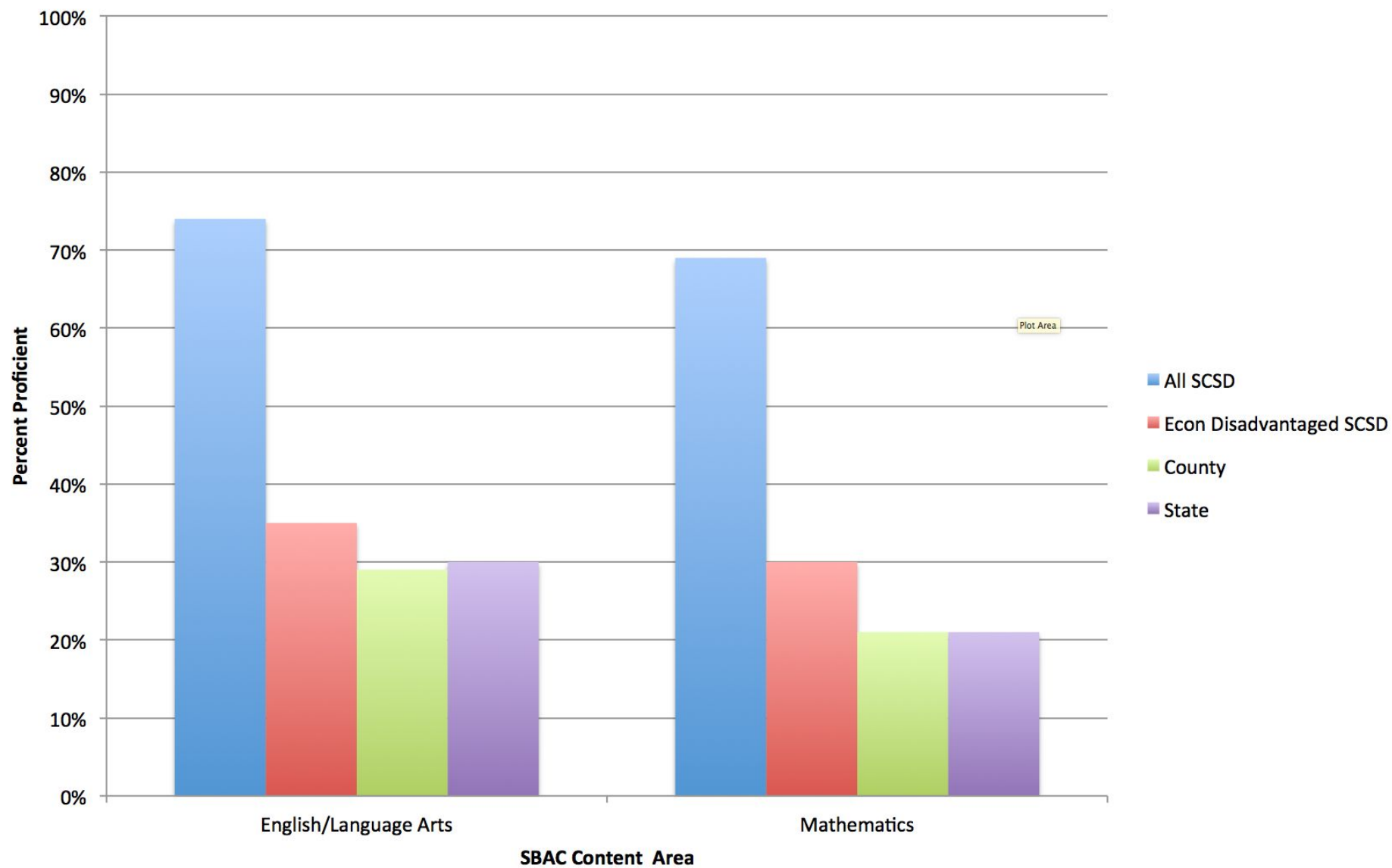
## Gender Performance in English Language Arts on SBAC by Grade



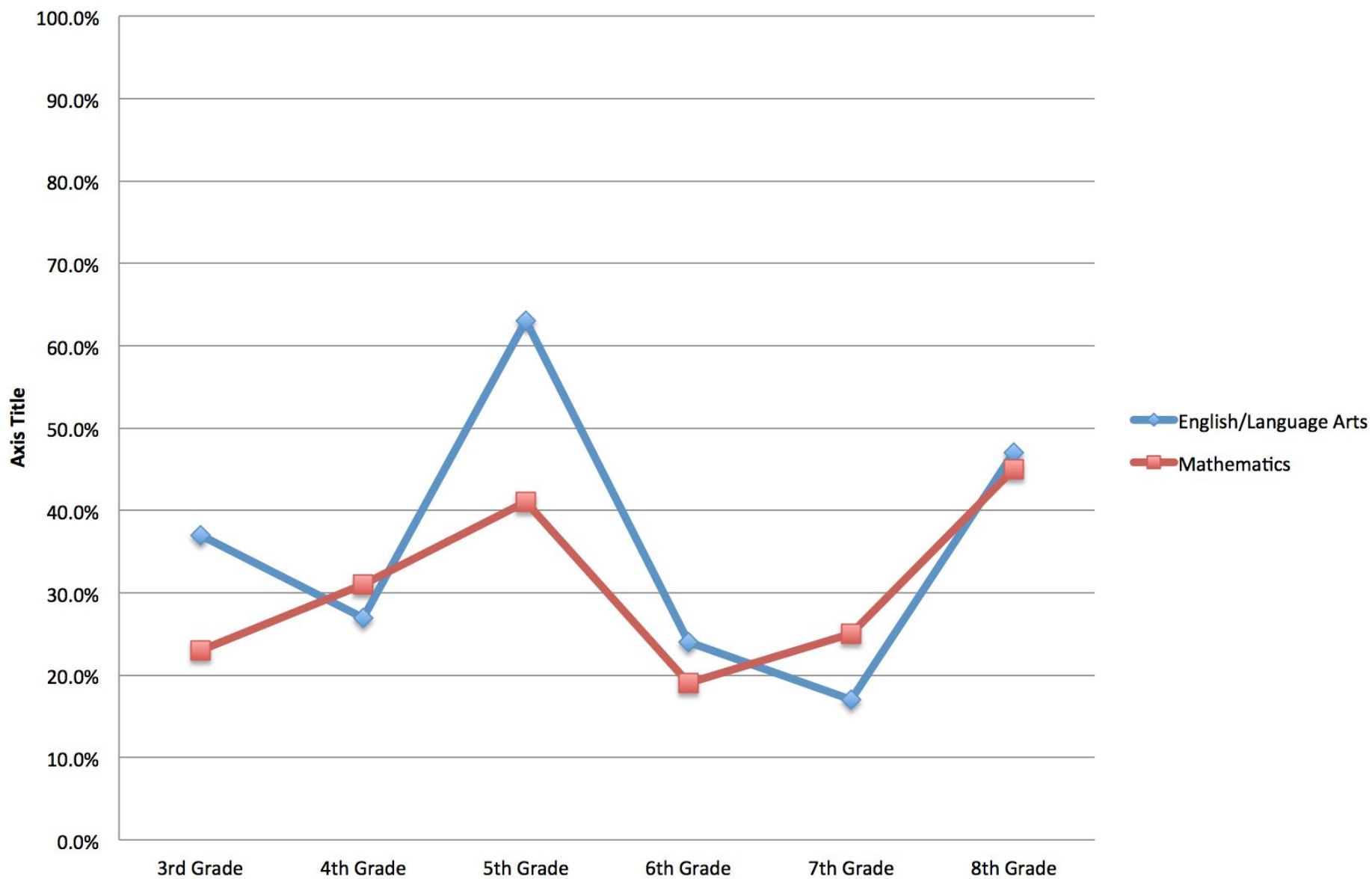
## Gender Performance in Mathematics on SBAC by Grade



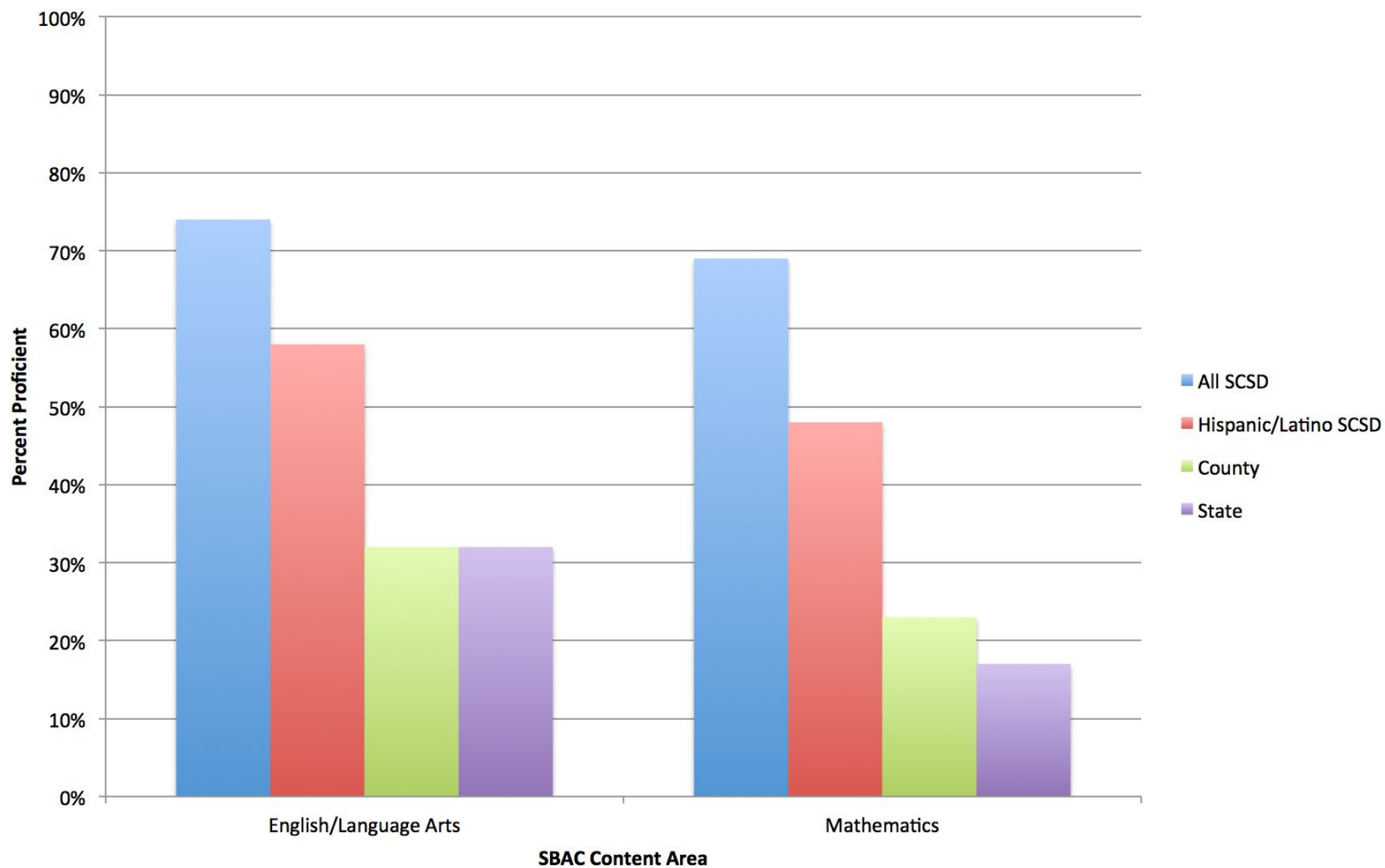
## Economically Disadvantaged Students Percent Proficient on SBAC



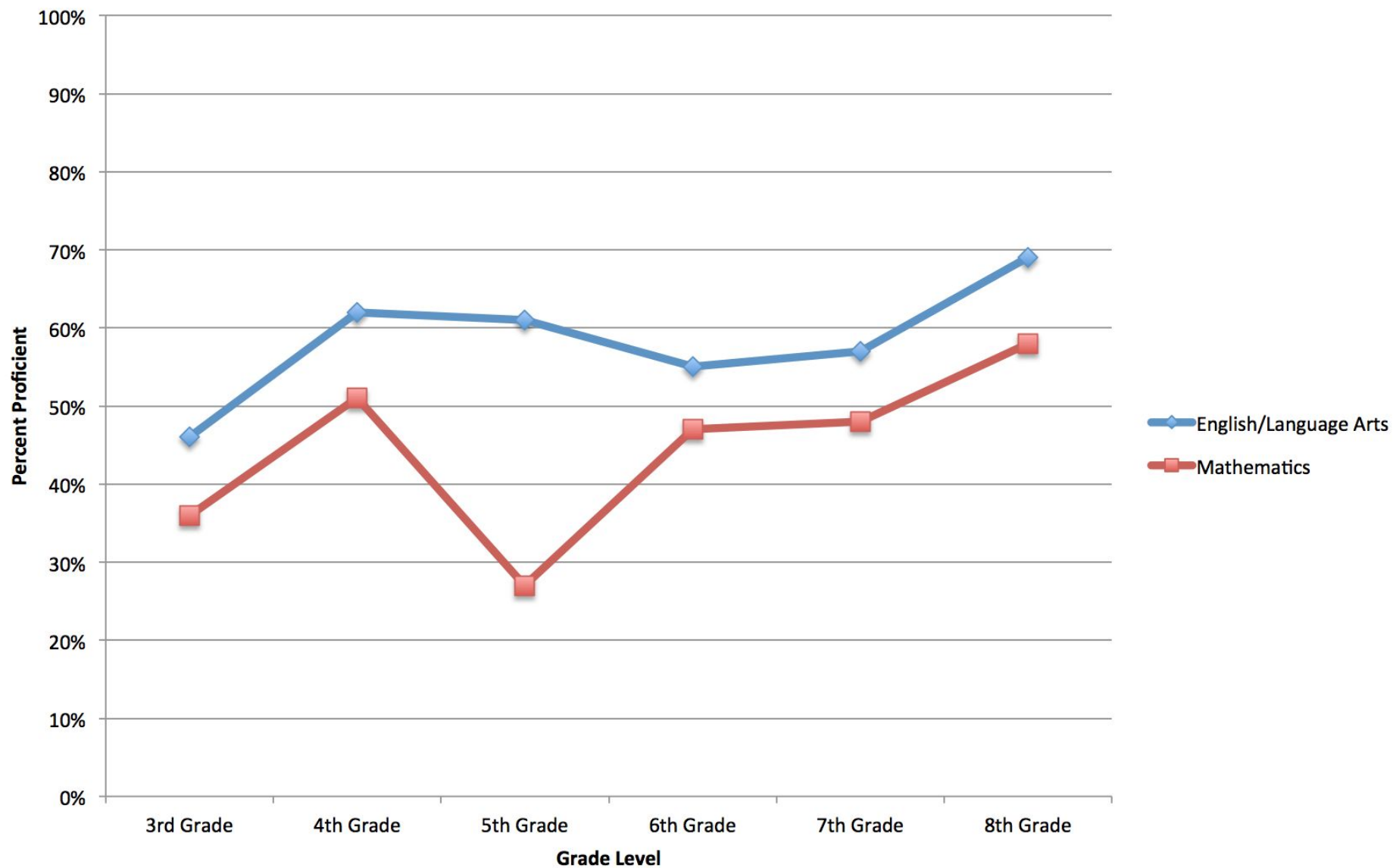
## Economically Disadvantaged Students Percent Proficient on SBAC by Grade



## Hispanic/Latino Students Percent Proficient on SBAC



## Hispanic/Latino Students Percent Proficient on SBAC by Grade



# Foster Youth

(Sample too small to measure in our District)

**Questions and Comments?**