

Tierra Linda Campus

Tierra Linda Middle School

4-5 Upper Elementary School

San Carlos Charter Learning Center

San Carlos School District



QUATTROCCHI KWOK
ARCHITECTS

Historical Context

- 2009-10 School Year:
 - School Boundary Reconfiguration
- 2010-11 School Year:
 - 21st Century Learning Communities Conversations
 - Realization Enrollment Issues Persist (and we are late!)
- 2011-12 & 2012-13 School Years:
 - Over 30 Community gatherings and Board Meetings
- 2011-12 & 2012-13 School Years:
 - Board Approves Facility Master Plan

Decision Making Criteria

1. Education Mission/Program Quality
2. Equity
3. 21st Century Learning
4. Small Schools (400 Elem. / 600 M.S.)
5. Improved Traffic Condition
6. Preserve “Neighborhood-ness”
7. Cost
8. Flexibility for Future Growth
9. Not “Over-Engineered”

Facilities Master Plan

- Measure H - November 2012, \$72M. Facilities Bond
- FMP Adopted March 2013
- Identified \$125M. of Need
 - Phase I - \$72M. - Criteria of small schools/21st Century Learning
 - Phase II - Additional \$23M. - Elementary School Improvements, State Funding
 - Phase III - Additional \$30M. - Additional Elementary, TL School Improvements
- Prop 39 State Funds for Energy Projects - Approximately \$1.7M. Applied to all sites for energy sustainability measures

Constraints (the problem with equity)

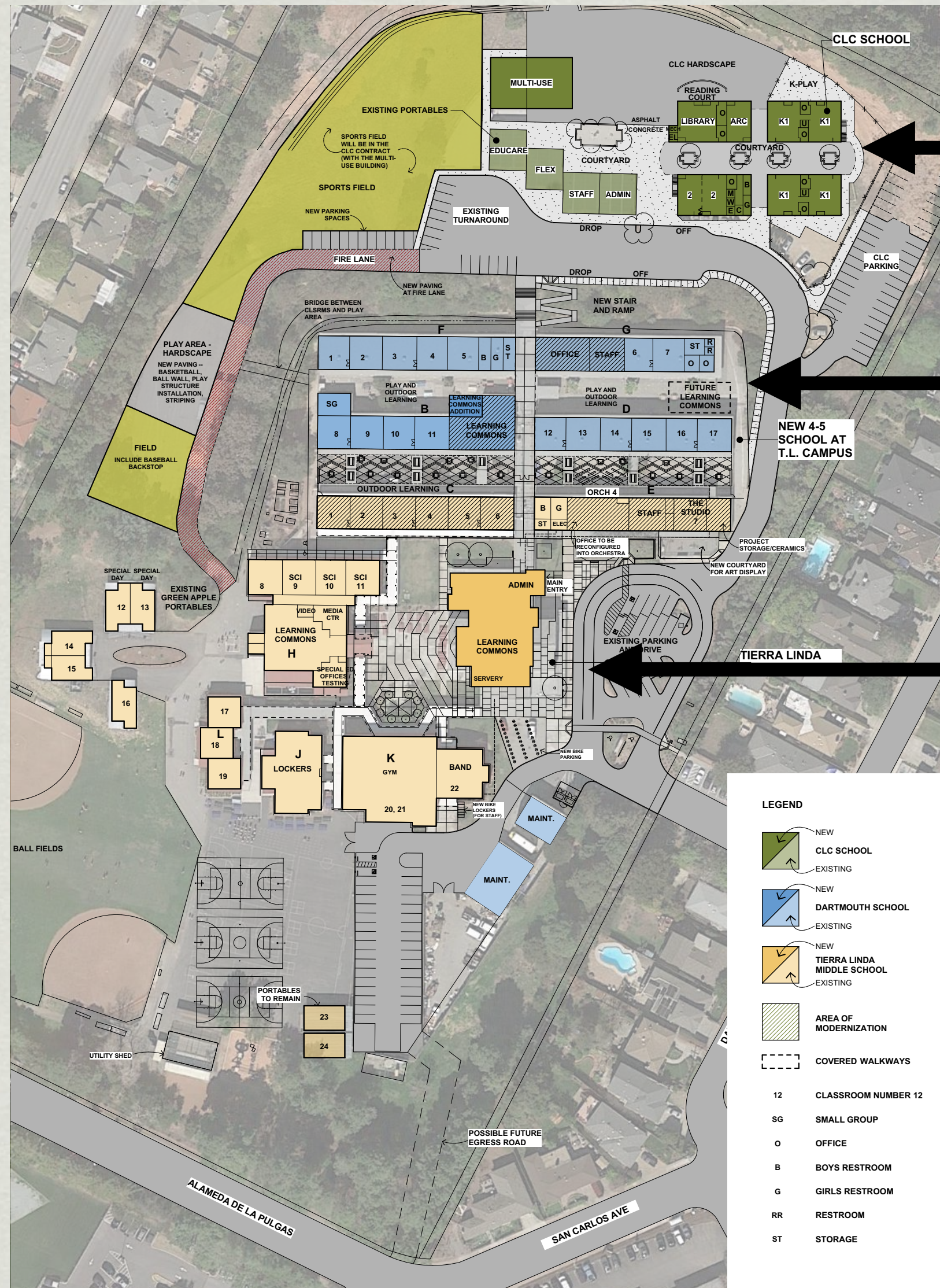
- Constrained by certain realities of funding and size
- We've never received all the money we've needed at one time
 - We need \$125 M. to do it all; We currently have \$72M.
- Certain schools received almost no funds and renovations from 1997 & 2005 Bond Projects
 - \$36M. of the \$60M. was spent on TL
- Campus sizes differ which constrains what we can do at certain sites
 - From WO (3.6 acres) to Heather (14.3 acres); and,
 - CMS (9 acres) to TL (19.7 acres)

District Wide Goals

- Increase capacity to accommodate growing enrollment
- Create 21st Century Learning Environments
 - Learning Commons
 - Connected Classrooms
 - Small Group Instruction
 - Technology
 - Flexible Furniture

Update

- \$72M. Measure H approved by voters November 2012
- Central MS completed Fall 2015
- Arroyo School under construction, completion August 2016
- Tierra Linda MS and Charter Learning Center have been submitted to the Division of the State Architect for review



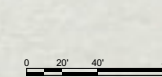
CHARTER LEARNING CENTER

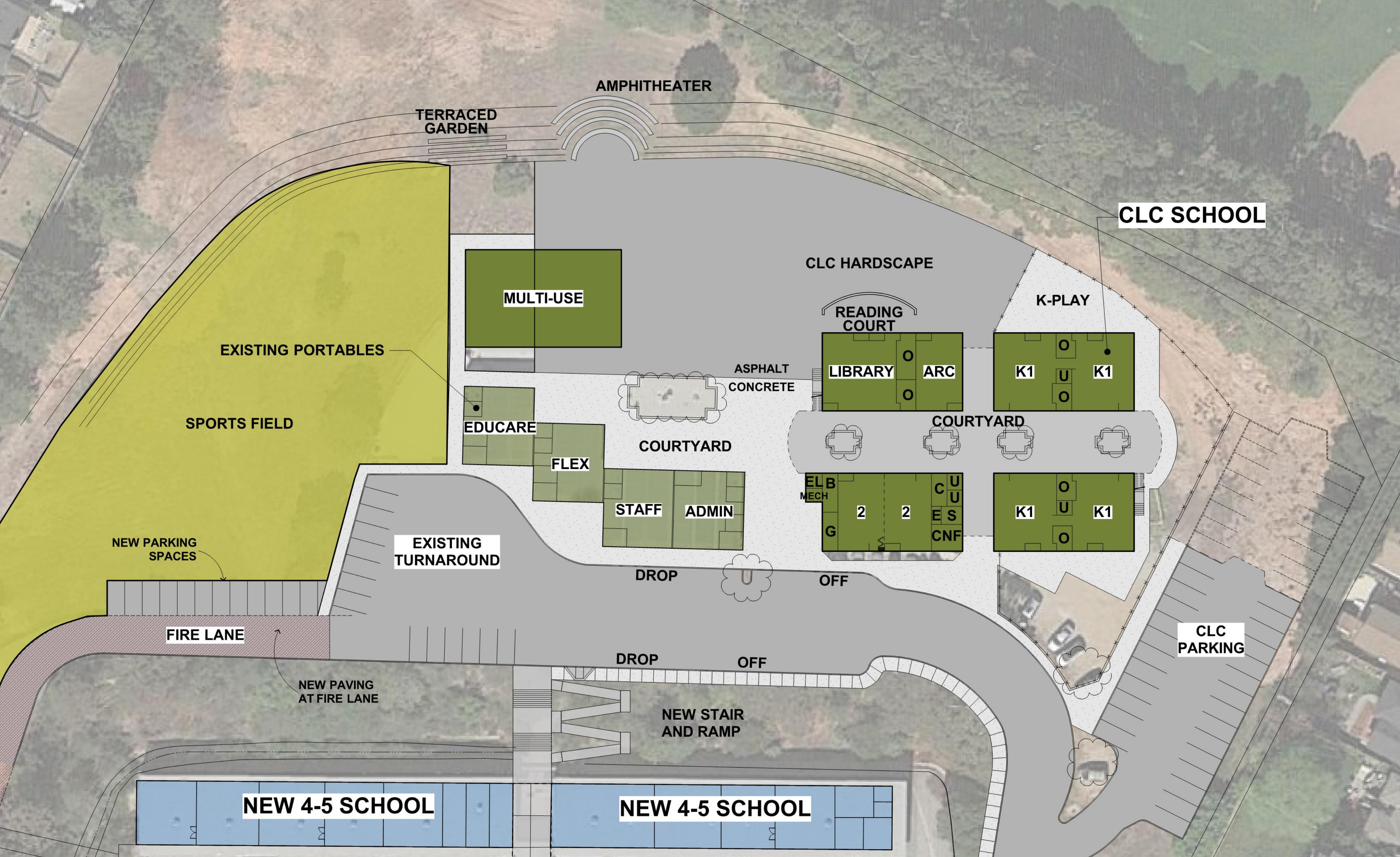
4-5 SCHOOL AT TL CAMPUS

TIERRA LINDA MIDDLE SCHOOL

OVERALL CAMPUS PLAN - CURRENT SCOPE TIERRA LINDA MIDDLE SCHOOL

SAN CARLOS SCHOOL DISTRICT
16 OCTOBER 2015
1330.00









CLC BUILDING PLAN - FLOOR 2
 SAN CARLOS CHARTER LEARNING CENTER
 SAN CARLOS SCHOOL DISTRICT
 1446.01

0 4' 8' 16'
 SCALE: 1/8" = 1'-0"



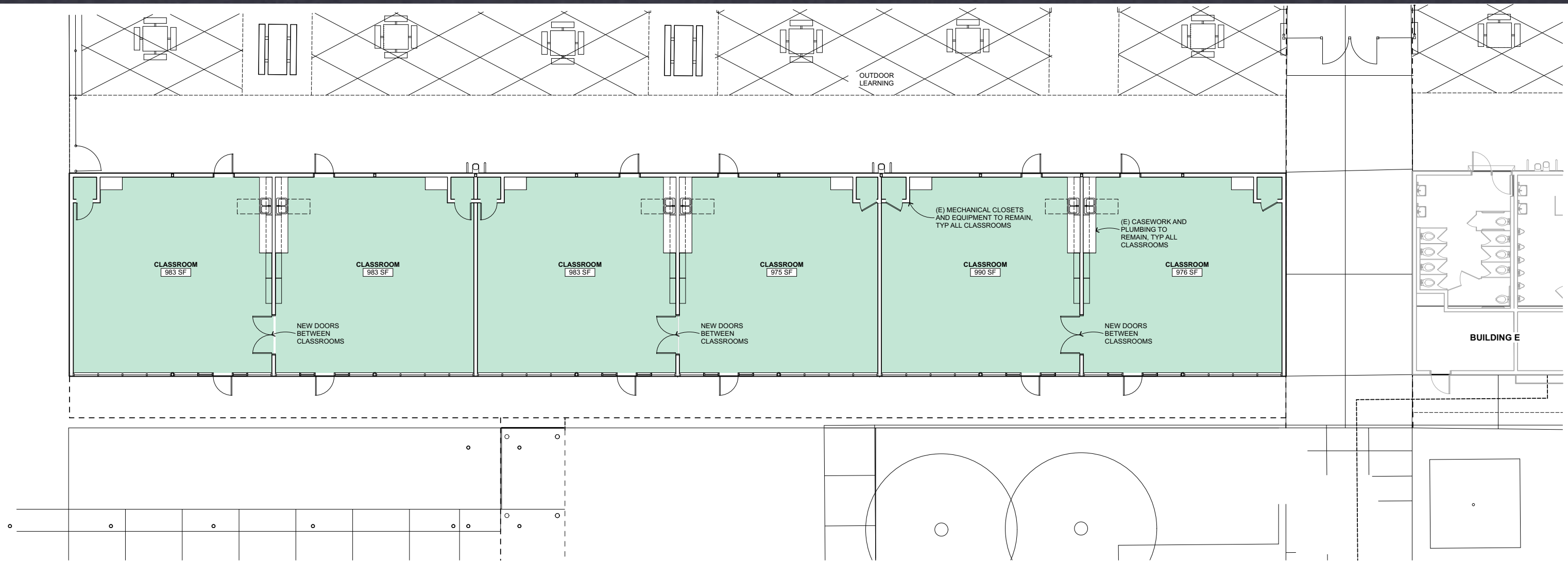
	CLASSROOMS
	BREAKOUT & ADMINISTRATION
	TOILETS & UTILITIES



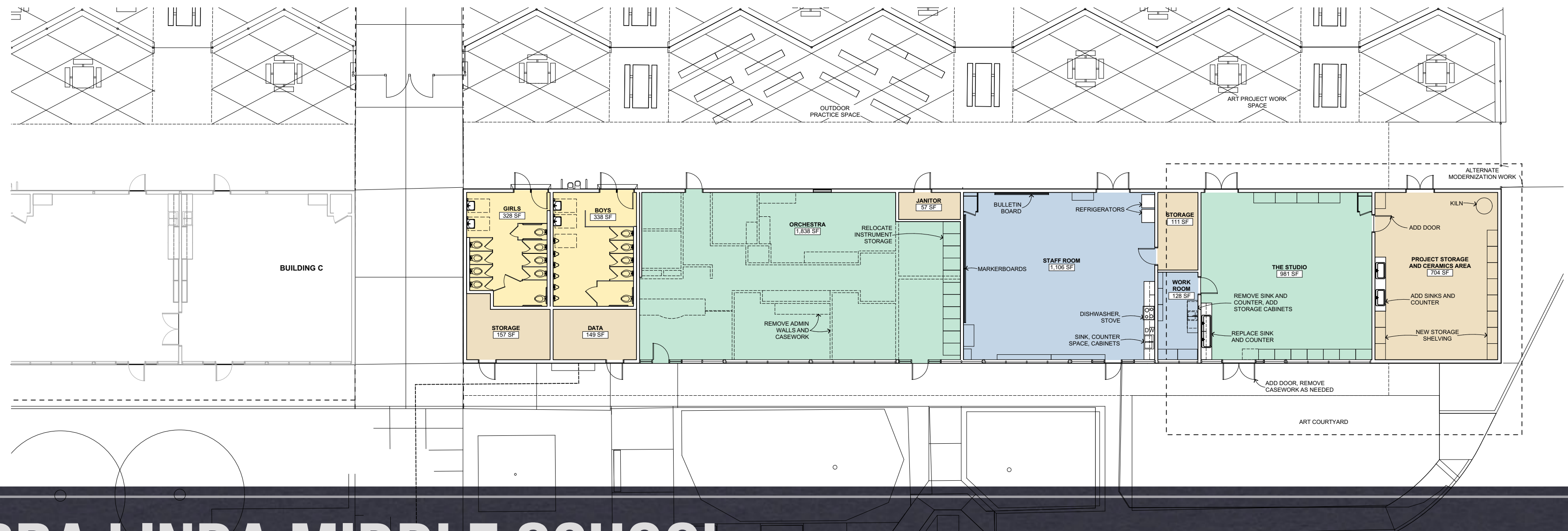


LEGEND

- LEARNING COMMONS
- CLASSROOMS
- CLASSROOM ACCESSORY
- ADMINISTRATION
- STORAGE / MECH / ELEC
- RESTROOMS

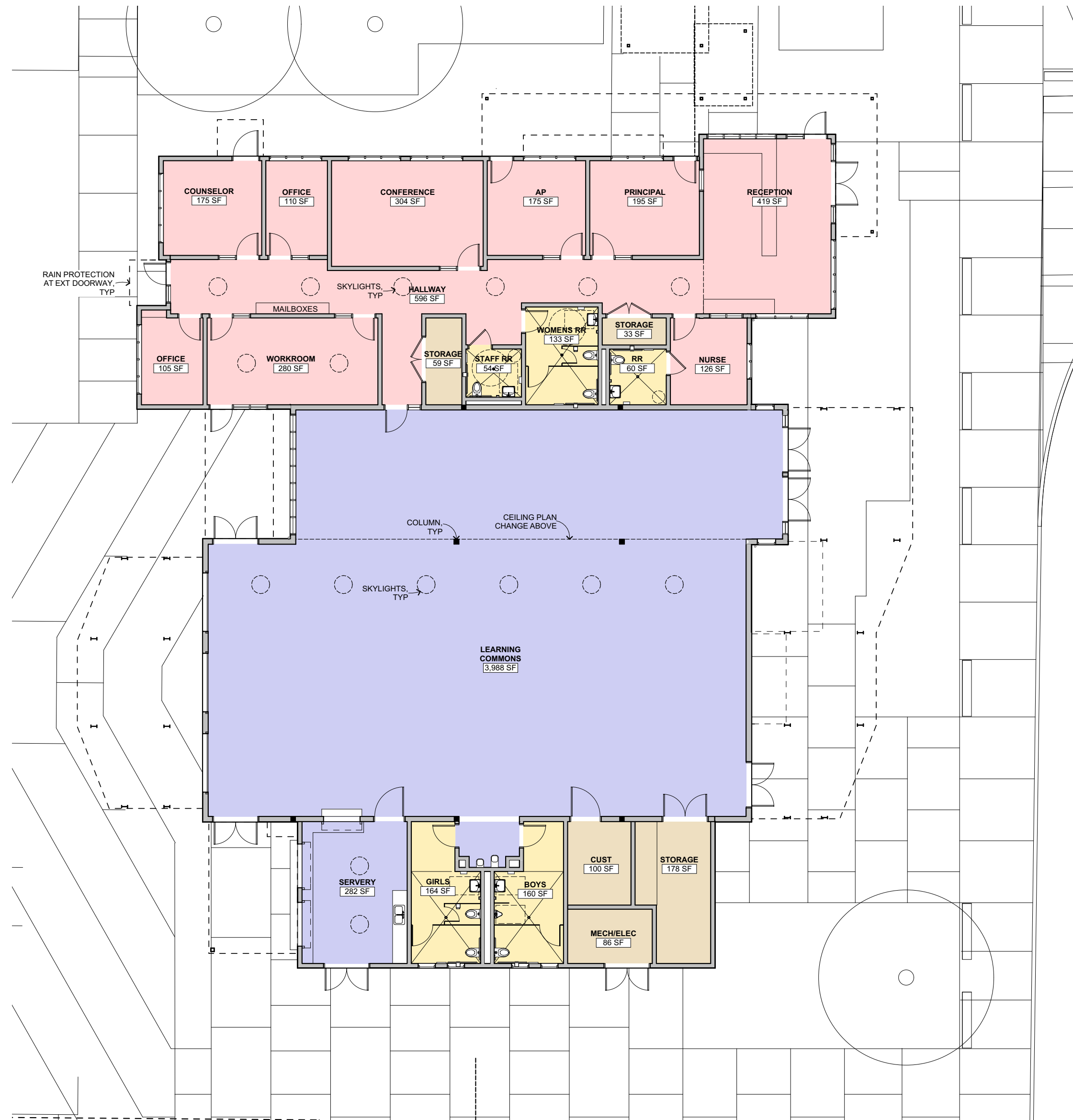


BUILDING C FLOOR PLAN
1/8" = 1'-0"



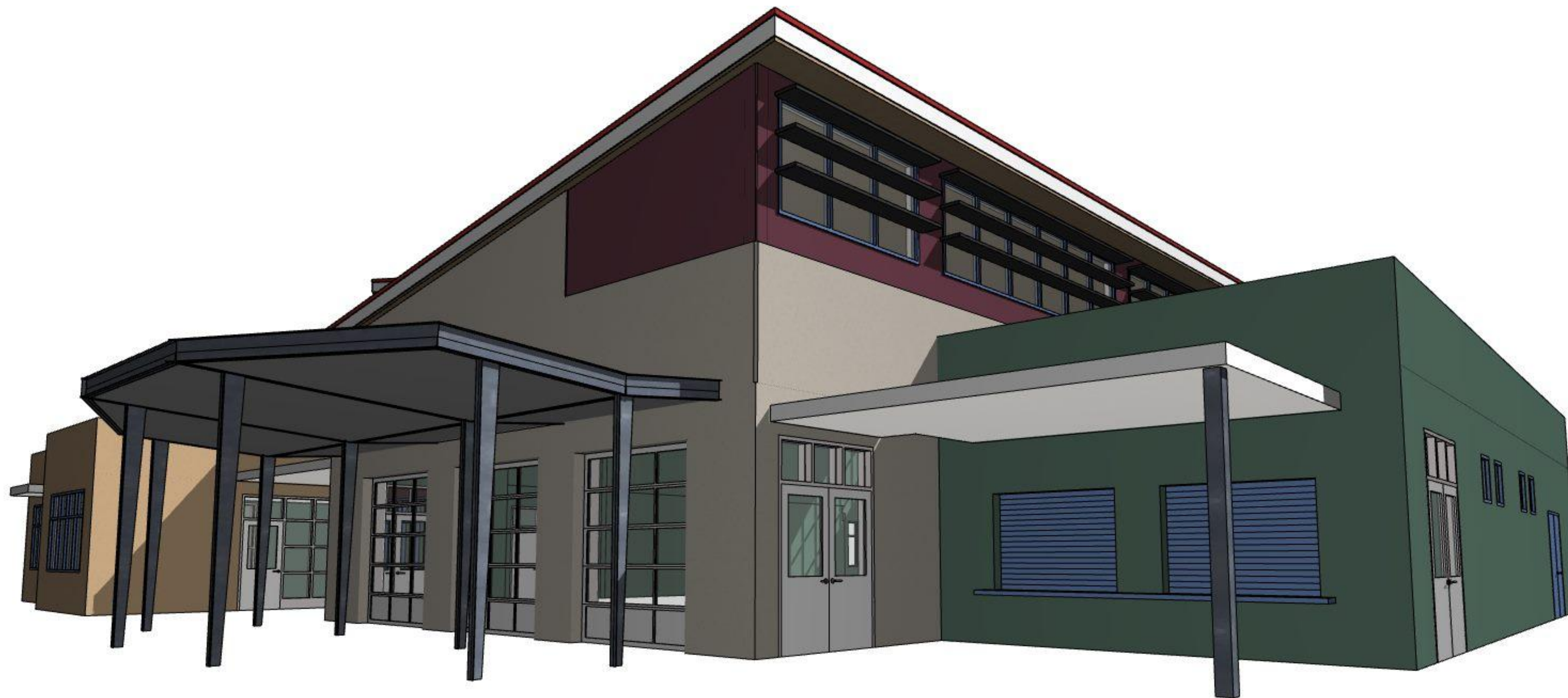
TIERRA LINDA MIDDLE SCHOOL

CLASSROOM WING





FRONT ENTRY VIEW 1



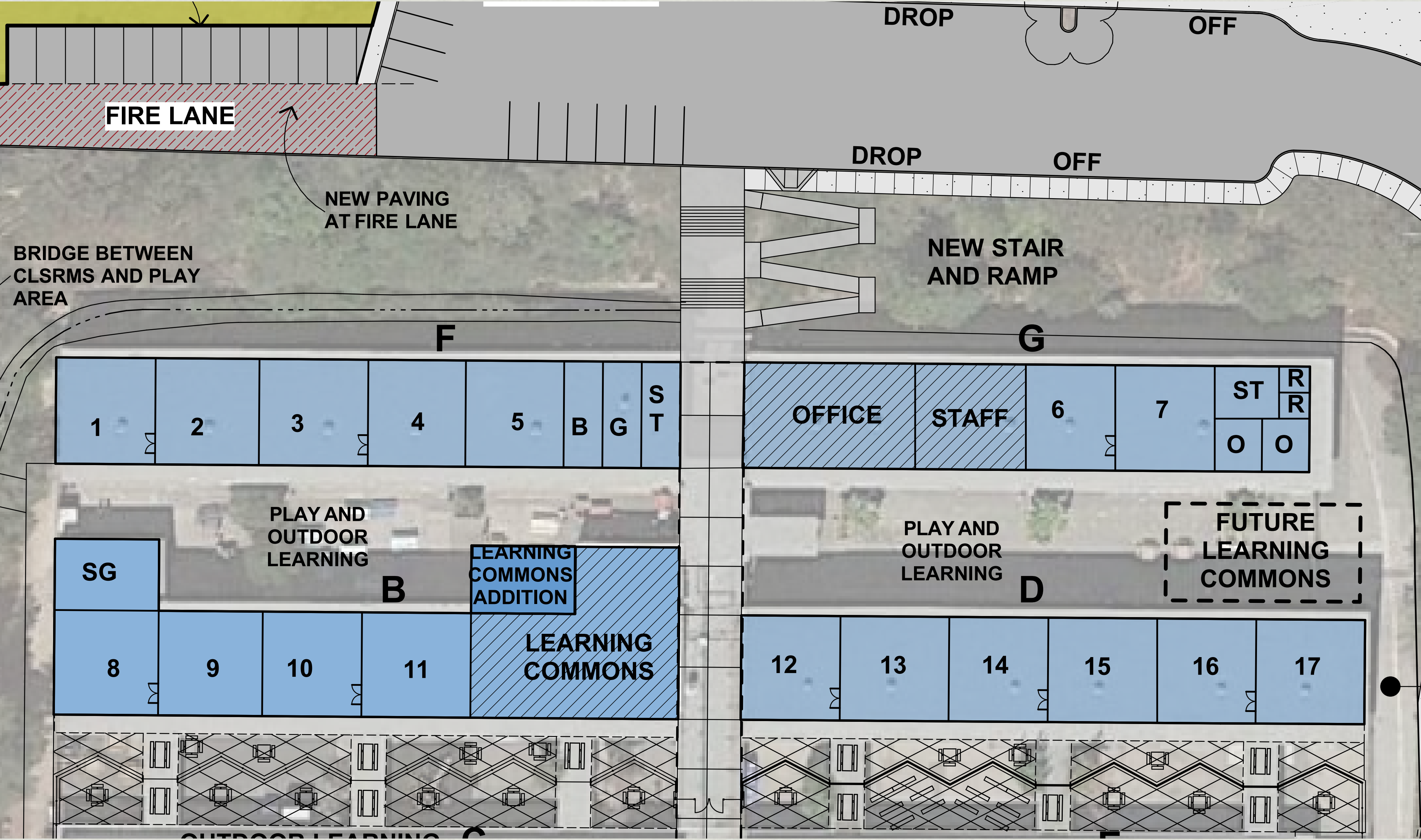
COURTYARD ENTRY VIEW

2



ADMINISTRATION VIEW

3



Schedule

- Tierra Linda Site Development: **Summer 2016**
- Tierra Linda New Construction: **Fall 2016 through Summer 2017**
- Tierra Linda Modernization: **Summer 2017**
- 4-5 School Modernization: **Summer 2017**
- CLC (Montessori) Modernization: **Fall 2016**
- CLC New Construction: **Fall 2016 through Summer 2017**

Construction Partner

- Interviewed 4 potential LLB partners on March 28 and March 30, 2016
 - Beals Martin, Cal-Pacific, Alten Construction, Blach
 - Alten Construction presented the lowest construction cost at \$20,428,734
 - Recommend pursuing Pre-Construction Services Services with Alten Construction

Questions?